



Wates received the **Queen's Award for Enterprise: Sustainable Development** for the second consecutive time in 2016. The award, which was presented by HRH The Princess Royal, lasts for three years.



In 2018 we received four awards from the **Chartered Institute of Building** at the Construction Manager of the Year Awards, including the overall award for our work on the V&A Museum extension project.



Our expertise in property services was recognised at the **PFM Awards 2018**, with the award for Partners in CSR (Public Sector) for our work with Twycross Zoo.



Our work with Birmingham City Council saw us win the **Outstanding Approach to Repairs and Housing Maintenance** at the **UK Housing Awards**.



We were shortlisted for Contractor of the Year (>£500m) at the **Construction News Awards 2019**.



We are among a select group of companies that have achieved the **Investors in People Gold** accreditation for a third successive three-year period. The standard means our employees know they work for an organisation that is committed to being trusted, progressive and sustainable, and which seeks to engage people by treating them fairly and with care.

## An award-winning year

Wates

Head Office  
Wates House  
Station Approach  
Leatherhead  
Surrey KT22 7SW  
Tel: 01372 861000

### SOME OF OUR CLIENTS AND PARTNERS...



"We believe that good business, well done, is a force for good in society. Through the company's core activities, the Wates team works together with customers and partners to create quality assets, to provide valuable services and to generate social value for the communities in which we work."

Sir James Wates CBE  
Chairman



# Wates

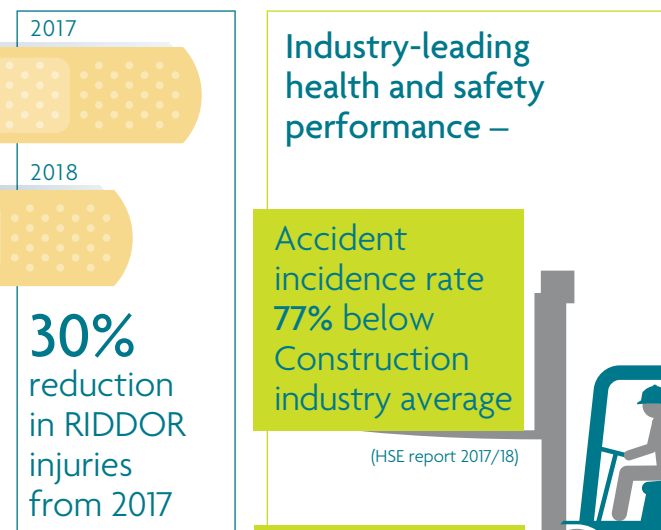
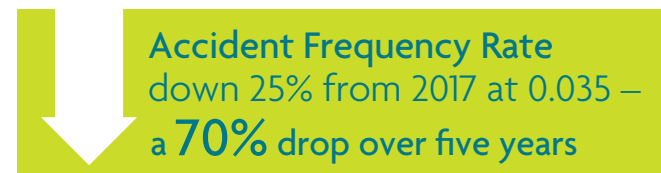
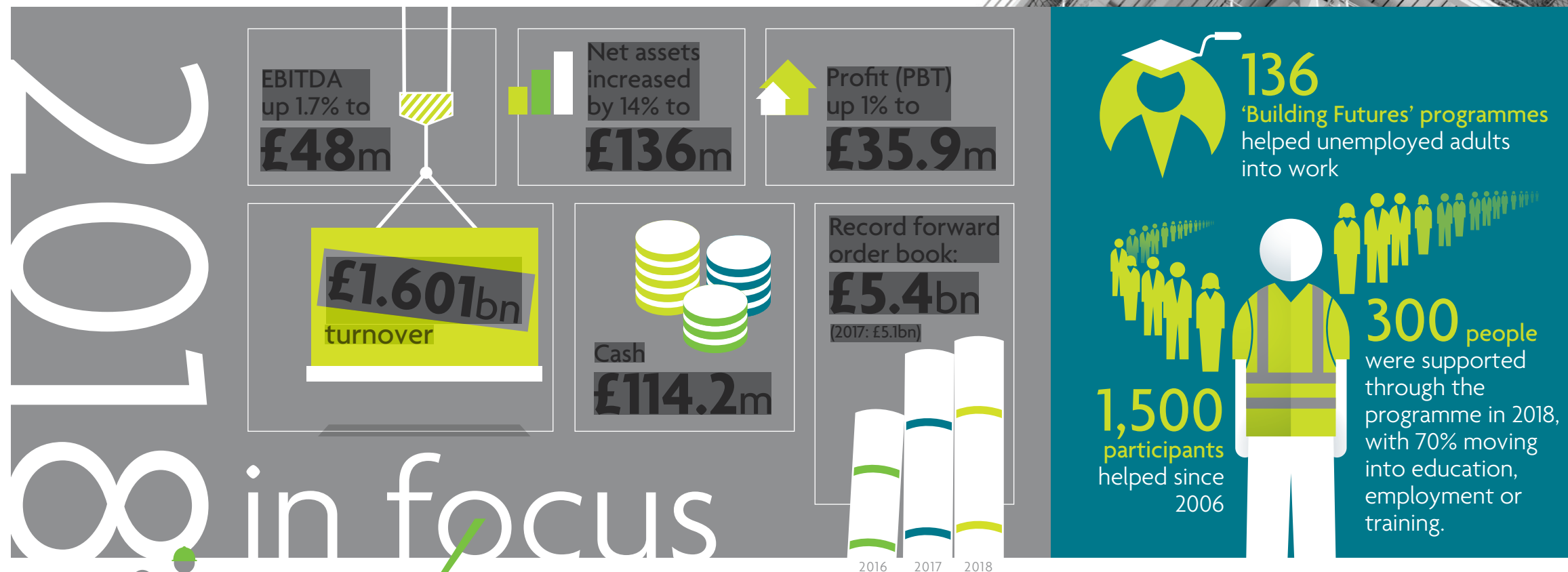
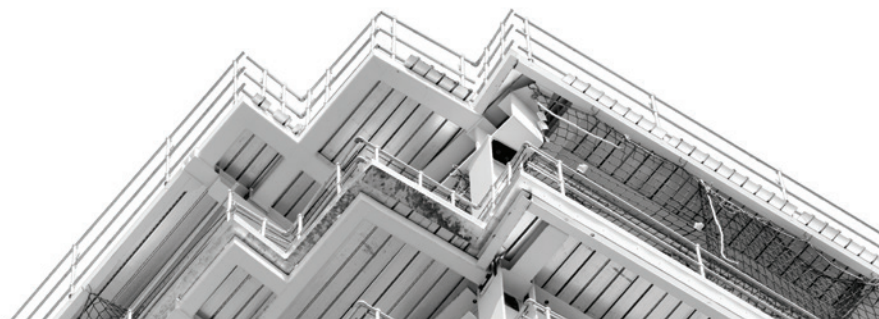
wates.co.uk

wates.co.uk

Chairman:  
Sir James Wates CBE

Chief Executive:  
David Allen

The Wates Group, established in 1897, is one of the leading privately-owned, construction, development and property services companies in the UK. We employ almost 4,000 people, working with a range of clients and partners from across both the public and private sectors. Our work is guided by the purpose of inspiring better ways of creating the places, communities and businesses of tomorrow.



## Our businesses

### WATES CONSTRUCTION [wates.co.uk/construction](https://wates.co.uk/construction)

Wates Construction undertakes programmes and projects for government, local authorities and the private sector across education, residential, commercial, leisure and justice sectors. The business has a strong presence in residential development, notably high-density city housing, student accommodation and senior living. We are a recognised leader in the design and construction of schools, colleges and universities. The business also specialises in heritage projects, and is responsible for restoring some of the nation's most iconic and historical buildings, including parts of the Parliamentary Estate. Nearly 80% of its business is from repeat customers. We operate nationally via a network of strategically placed local offices and deliver exemplary projects through a number of major national and regional frameworks.

Group Managing Director: Paul Chandler

### SES ENGINEERING SERVICES [ses-ltd.co.uk](https://ses-ltd.co.uk)

SES is the UK's pre-eminent design-led mechanical and electrical engineering provider, delivering for its customers in a wide range of environments. SES delivers bespoke optimised solutions for the whole construction industry, maximising offsite manufacture in its production facility, Prism. SES was the first mechanical, electrical and plumbing contractor to achieve Building Research Establishment (BRE) and Building Information Modelling (BIM) Level 2 Certification.

Managing Director: Jason Knights

### WATES SMARTSPACE [wates.co.uk/smartspace](https://wates.co.uk/smartspace)

Wates Smartspace delivers high quality fit-out, refurbishment and maintenance services nationally, carefully enhancing its customers' operating environments. Key customers include commercial offices, broadcasters, retail, airports, developers, banks, distribution centres and public sector premises.

Managing Director: Helen Bunch

### WATES RESIDENTIAL DEVELOPMENTS [wates.co.uk/residential-development](https://wates.co.uk/residential-development)

The Wates Residential Developments Group is the Group's investment arm focused on all aspects of the residential development market – from land, planning and development expertise to construction and delivery. It comprises Wates Developments and Wates Residential South and works with a wide range of partners across both public and private sectors of residential development, meeting the UK's diverse and substantial market need for new homes within our communities.

Group Managing Director: David Brocklebank

### WATES DEVELOPMENTS [wates.co.uk/developments](https://wates.co.uk/developments)

Wates Developments specialises in land, planning and residential development throughout Southern England, with a large and growing portfolio of potential residential development land. The business focuses on securing planning consents in sustainable locations, in both town and country, wherever it is needed most.

Managing Director: Martin Leach

### WATES RESIDENTIAL SOUTH [wates.co.uk/residential](https://wates.co.uk/residential)

Wates Residential South develops mixed tenure housing schemes in partnership with both public and private sector organisations and has a vision to build great places where people want to live, helping to tackle the UK's urgent need for new housing. As well as building and selling homes to the public, the business also provides affordable homes for social landlords, such as local authorities.

Managing Director: Paul Nicholls

### WATES LIVING SPACE [wates.co.uk/livingspace](https://wates.co.uk/livingspace)

Wates Living Space is a leading national provider of planned and responsive maintenance services in the UK social housing sector, maintaining over 500,000 homes nationwide every year. The business provides a broad range of services for local authorities and housing association partners, supporting the regeneration of disadvantaged communities and improving standards of living for residents by renewing existing housing stock. The business is also a leading provider of Fire Risk Assessment works for local authorities and housing associations and undertakes refurbishment and protection of dangerous structures.

Managing Director: David Morgan

### WATES FACILITIES MANAGEMENT [wates.co.uk/fm](https://wates.co.uk/fm)

Wates Facilities Management is a growing presence in the UK facilities management (FM) sector, providing self-delivered mechanical and electrical and total FM services to an impressive client list across the public and private sectors. Operating in over 14 different environments including corporate, healthcare, hospital, education, leisure, insurance, legal and financial sectors our ambition is to be the most trusted partner in facilities management.

Managing Director: James Gregg

### NEEDSPACE? [needspace.co.uk](https://needspace.co.uk)

Needspace? provides quality managed, flexible workspace to a growing number of small businesses in London and the South East. It offers a range of office, workshop and studio units to small businesses looking to grow in an entrepreneurial environment. The business has an expanding portfolio of premises, and now manages spaces in Clerkenwell, Clapham, Earlsfield, Hammersmith and Islington in London, and Crawley and Horsham in West Sussex. The company's aim is to create and nurture entrepreneurial communities which encourage businesses to network, thrive and support each other.

Managing Directors: Charlie Wates & Richard Trimming

