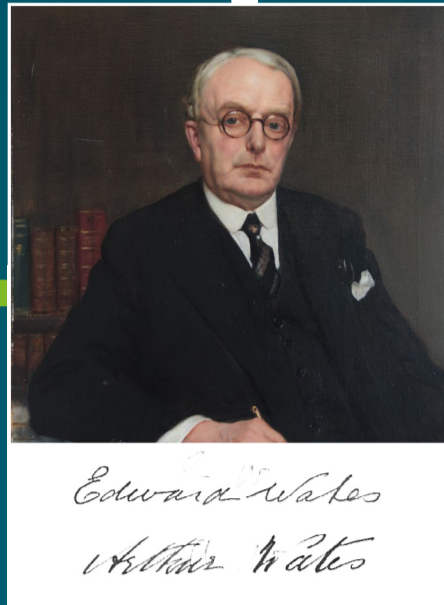


125 years of Wates

COMPANY FOUNDED
by Edward Wates

1897



1920s

2ND GENERATION WATES FAMILY

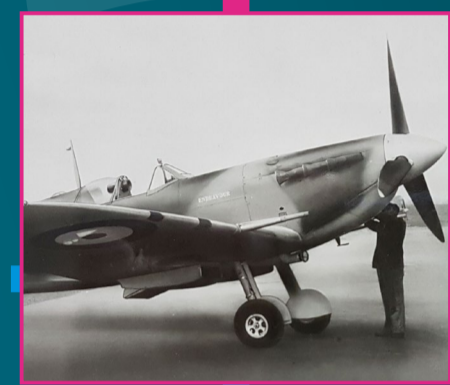
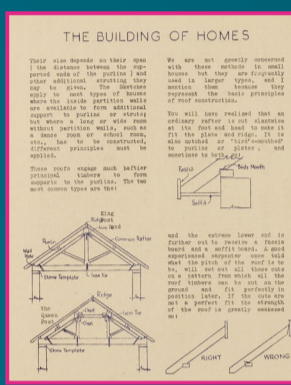
Edward's sons, Norman, Alan, and Ronald, expand the company into speculative house building and then into general contracting



1939

WAR FOOTING

Wates shifts focus to civil engineering and infrastructure to support the war effort, building aerodromes, army camps and factories, at home and overseas



1943

WATES IN ALLIANCE

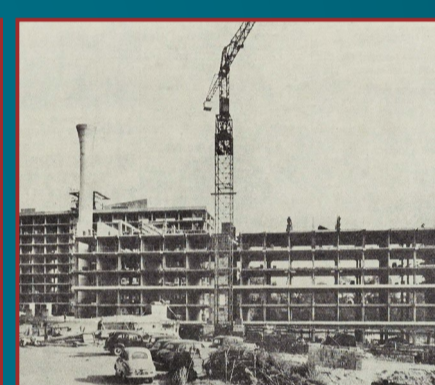
of British companies responsible for the Mulberry Harbours, used after the Normandy landings in WWII



1950s

NEW PROCESSES

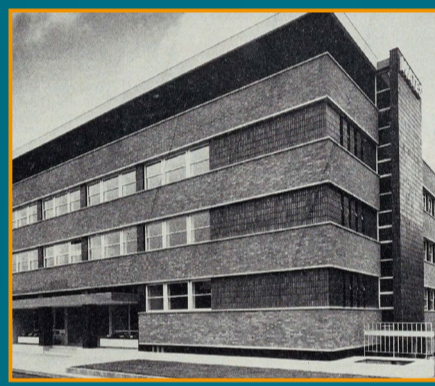
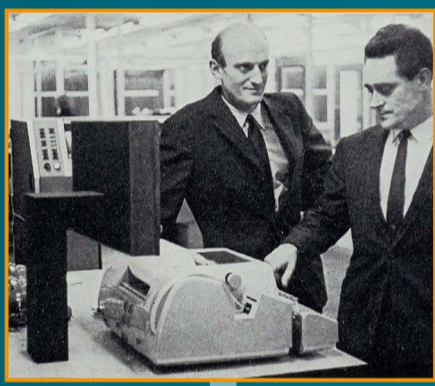
New 'system build' process used to build 60,000 homes including the Le Corbusier-inspired Grade II* listed Alton Estate in Roehampton, SW London, one of largest housing estates in the UK



1960s

3RD GENERATION WATES FAMILY

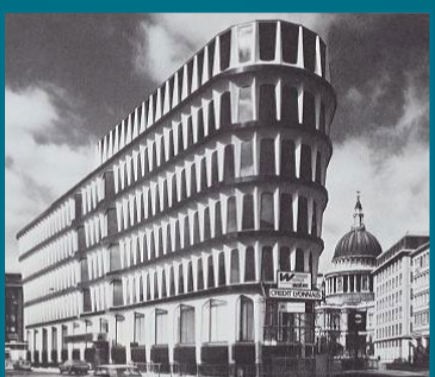
Norman and Ronald's sons, Neil, Michael, Paul, Andrew, and Christopher - join the business; first computer terminal installed at company HQ; first new school built by Wates



1970s

AWARD-WINNING NEW HOMES DESIGNED

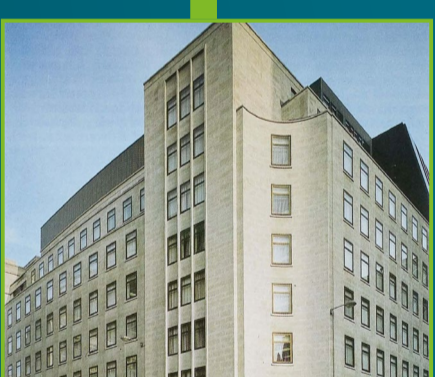
including the Dormy House; banking complex completed for Credit Lyonnais in Cannon Street, London



1980s

4TH GENERATION WATES FAMILY

Michael's son, James joins Wates; retail and City office blocks completed



1990s

BUSINESS GROWTH

Paul's son Andy, and Andrew's sons Tim and Jonny Wates join the business; new offices open in Leeds, Manchester, and Kent; refurbishments of National Gallery and Somerset House



2000s

ROYAL APPOINTMENT

Wates builds the Queen's Gallery at Buckingham Palace; refurbishes St Paul's Cathedral; enters the 'Needspace?' space sector with 'Needspace?'; moves to new HQ in Leatherhead, Surrey



2010s

ACQUISITIONS & ACHIEVEMENTS

Housing maintenance business boosted by major acquisitions; Wates Smartspace launched, providing refurbishment, fit-out and facilities management; SES Engineering Services joins the Group; award-winning extension of V&A Museum completed; named Major Contractor of the Year twice; awarded Queens Award for Enterprise: Sustainable Development, twice; James Wates appointed Group Chairman



2020s

CREATING TOMORROW TOGETHER

Work begins on refurbishing Parliament's Northern Estate; named as partner of £1.6bn+ estates regeneration projects for London boroughs of Havering and Harrow; retains Investors in People Gold status for fourth time in succession; builds first zero carbon schools and homes; Sir James Wates knighted for services to business and charity; four-year Zero Harm campaign results in industry-leading health and safety record and the Group commits to greater diversity and to eliminating carbon from its operations..



INVESTORS IN PEOPLE
We invest in people Gold